

# SECTION 4 CHARTS AND DIAGRAMS

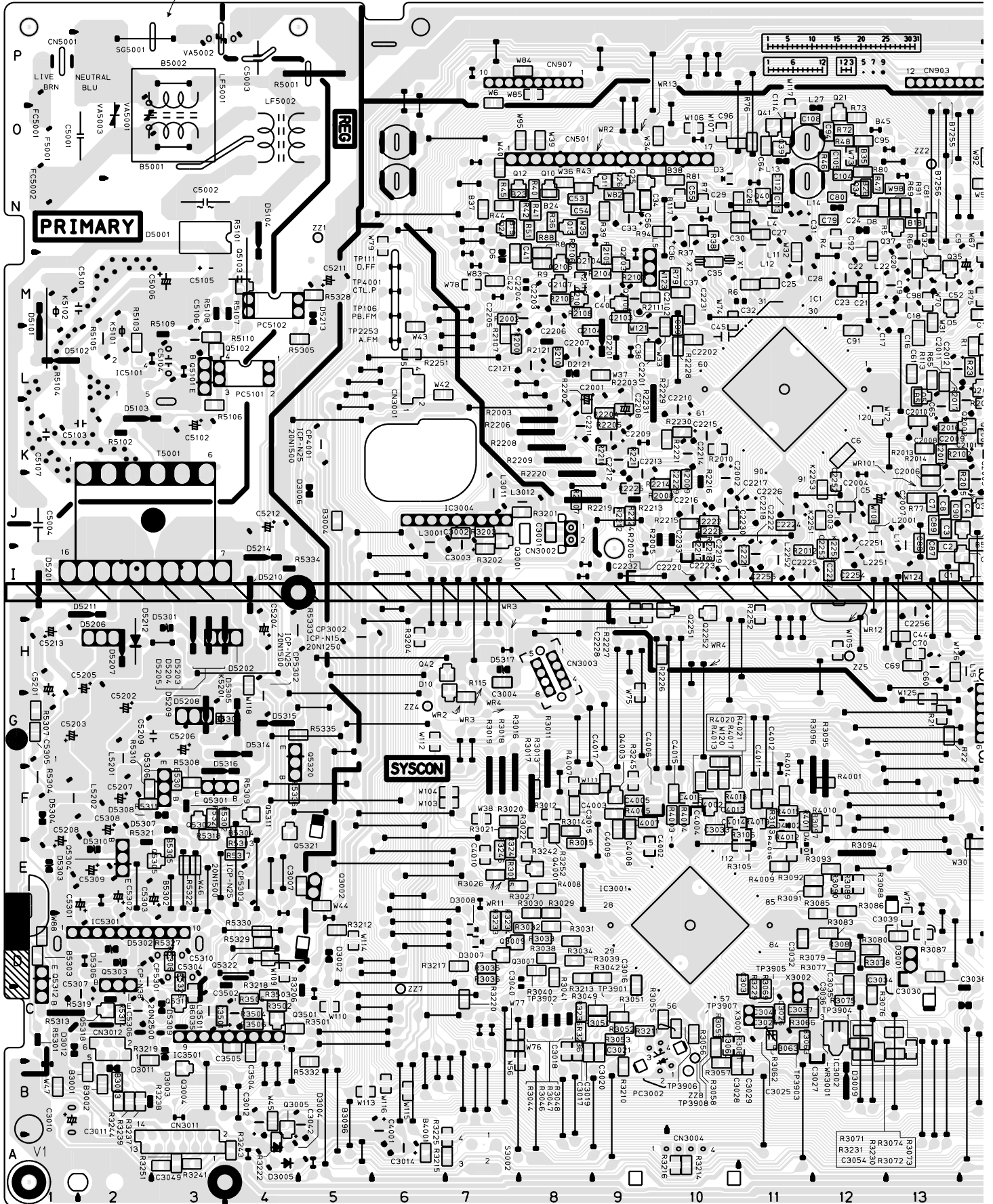
## COMPONENT PARTS LOCATION GUIDE < MAIN >

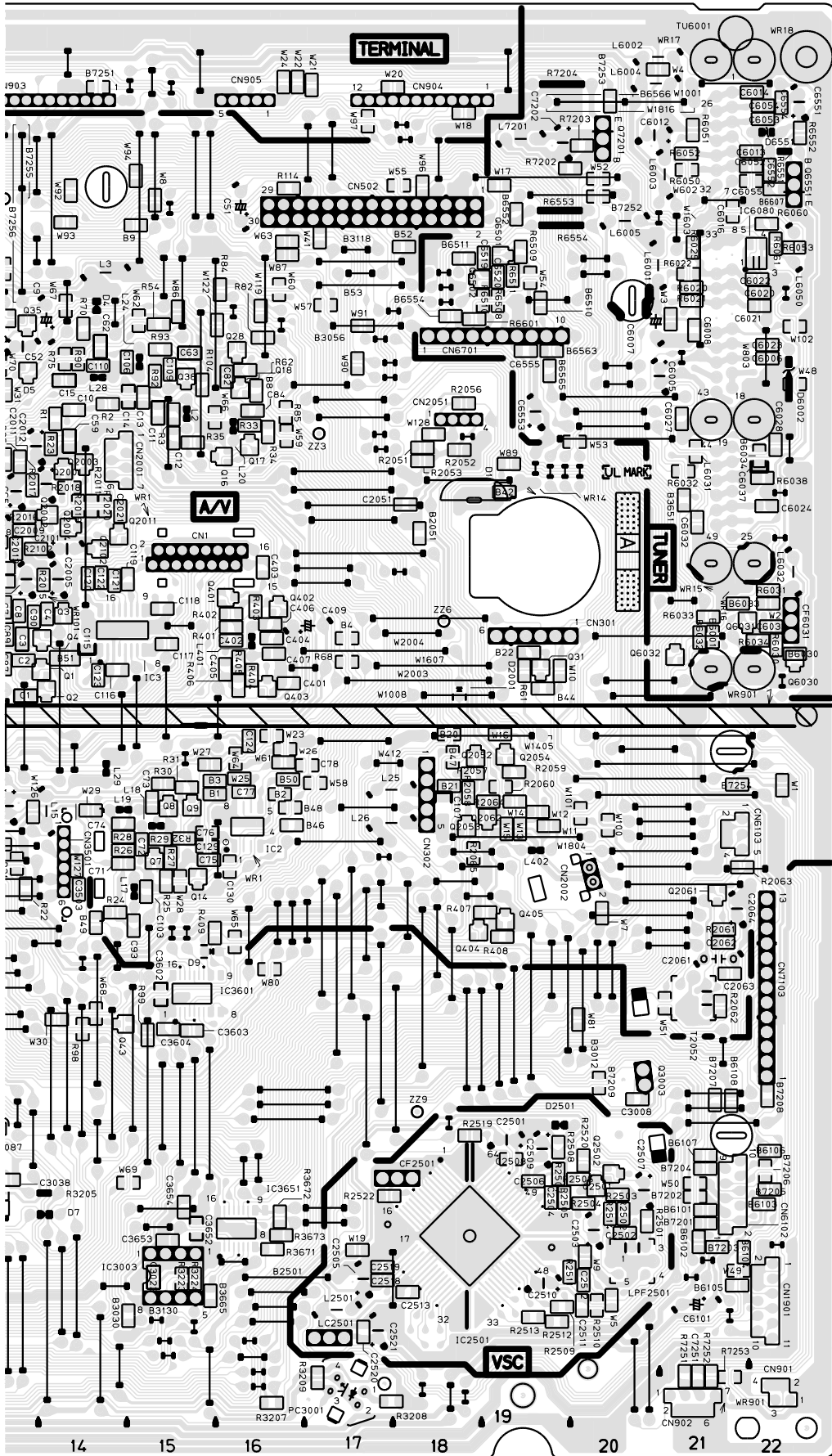
REF.NO.	LOCATION	REF.NO.	LOCATION	REF.NO.	LOCATION	REF.NO.	LOCATION	REF.NO.	LOCATION	REF.NO.	LOCATION	REF.NO.	LOCATION	REF.NO.	LOCATION	REF.NO.	LOCATION												
<b>CAPACITOR</b>																													
C1	B C	131	C2001	A D	16J	C3040	A D	8D	CN2051	A D	18L	L402	A D	19G															
C2	B C	131	C2002	A D	9K	C3041	A D	11C	CN3001	A D	8J	L2001	A D	12J															
C3	B C	13J	C2003	A D	10K	C3042	A D	5B	CN3002	A D	6L	L2251	A D	13I															
C4	B C	14J	C2004	A B	12J	C3049	A B	3A	CN3003	A D	8H	L2252	A D	11I															
C5	B C	13J	C2005	A B	12J	C3054	B C	12C	CN3004	A D	10A	L2501	A D	17B															
C6	B C	12K	C2006	A B	14J	C3501	A D	3C	CN3011	A D	3A	L3001	A D	6J															
C7	B C	13J	C2007	A D	13K	C3502	A D	4C	CN3012	A D	2C	L3011	A D	7J															
C8	B C	13J	C2008	A D	13K	C3504	B C	4C	CN5001	A D	1P	L3501	A D	3C															
C9	A D	14M	C2009	B C	13K	C3505	B C	4C	CN6102	A D	21C	L5201	A D	2G															
C10	B C	14L	C2010	B C	13K	C3602	B C	4C	CN6103	A D	21H	L5202	A D	1F															
C11	B C	15L	C2011	A D	14L	C3603	B C	15E	CN6701	A D	18M	L6001	A D	20N															
C12	B C	15L	C2012	A D	13L	C3604	B C	15E	CN7103	A D	22E	L6002	A D	21P															
C13	B C	15L	C2013	B C	13K	C3652	B C	15C										R2104	B C	9M	R3080	B C	12D	R5318	B C	3F			
C14	B C	15L	C2014	B C	14K	C3653	B C	15C										R2105	B C	9M	R3081	B C	12D	R5319	B C	2C			
C15	B C	14M	C2015	A D	18K	C3654	A D	15C										R2106	B C	8M	R3082	B C	12D	R5320	A D	3E			
C16	B C	13L	C2016	B C	21F	C4001	A D	6B										R2107	B C	7L	R3085	B C	12D	R5322	B C	3E			
C17	A D	12M	C2063	B C	21F	C4002	B C	9E										R2108	B C	8M	R3086	B C	12E	R5323	B C	3F			
C18	A D	13M	C2064	A D	21G	C4004	B C	10F										R2109	B C	8M	R3087	B C	13D	R5326	B C	3D			
C19	A D	13M	C2101	A D	14K	C4005	B C	9F										R2110	B C	8M	R3088	B C	12E	R5327	B C	3D			
C20	A D	13M	C2102	A D	9M	C4006	B C	9F										R2111	B C	9M	R3089	B C	12E	R5328	B C	5M			
C21	A D	12M	C2103	A D	9M	C4007	B C	9F										R2112	A D	8L	R3090	B C	12E	R5329	B C	4D			
C22	A D	12M	C2104	A D	9L	C4008	B C	9F										R2113	B C	8M	R3091	B C	12E	R5330	B C	4D			
C23	B C	12M	C2121	A D	8L	C4009	B C	9F										R2114	B C	9K	R3092	B C	12E	R5332	B C	5B			
C24	B C	12M	C2201	B C	9L	C4010	B C	7E										R2115	B C	9K	R3093	B C	12E	R5333	A D	4H			
C25	B C	11M	C2202	B C	10L	C4011	B C	11F										R2116	B C	9K	R3094	A D	12E	R5334	A D	5I			
C26	B C	10M	C2203	A D	8M	C4012	B C	11F										R2117	B C	10M	R3095	A D	12F	R5335	B C	5G			
C27	A D	11M	C2204	A D	8M	C4013	B C	10F										R2118	A D	8K	R3096	A D	12F	R5336	B C	4F			
C28	A D	11M	C2205	A D	8M	C4014	B C	10F										R2119	B C	10M	R3097	B C	12F	R6020	B C	21N			
C29	B C	11M	C2206	A D	8M	C4015	B C	10F										R2120	B C	10M	R3098	B C	11F	R6021	B C	21N			
C30	A D	11M	C2207	A D	8L	C4016	B C	10F										R2121	B C	9K	R3105	B C	11E	R6022	B C	21N			
C31	A D	11M	C2208	A D	9K	C4017	B C	9F										R2122	B C	9J	R3106	B C	11F	R6025	B C	21N			
C32	A D	9N	C2209	A D	9K	C5001	A D	2O										R2123	A D	9J	R3201	B C	7J	R6030	B C	22J			
C33	A B	9N	C2210	A D	10K	C5002	A D	4N										R2124	B C	8J	R3202	B C	8J	R6031	B C	22J			
C34	A B	9N	C2211	A D	8K	C5003	A D	4J										R2125	B C	10J	R3203	B C	7J	R6032	B C	21L			
C35	A B	10M	C2212	A D	9K	C5004	A D	1P										R2126	B C	6H	R3204	B C	6H	R6033	B C	21J			
C36	A B	10M	C2213	A D	9J	C5005	A D	3M										R2127	B C	10J	R3205	A D	14C	R6034	B C	22J			
C37	A B	10M	C2214	A D	10K	C5101	A D	2M										R2128	B C	10K	R3206	A D	5C	R6038	B C	22L			
C38	A B	10M	C2215	A D	10K	C5102	A D	3K										R2129	B C	10K	R3207	B C	16A	R6050	B C	21O			
C39	A D	9M	C2216	A D	10J	C5103	A D	1K										R2130	B C	17A	R3208	B C	17A	R6051	B C	21O			
C40	A D	8M	C2217	A D	10J	C5104	A D	3L										R2131	B C	10K	R3209	B C	17A	R6052	B C	21O			
C41	A D	7M	C2218	A D	11J	C5105	A D	3M										R2132	B C	9B	R3210	B C	9B	R6053	B C	22N			
C42	A D	13H	C2219	A D	10J	C5106	A D	3L										R2133	B C	10J	R3211	B C	9C	R6060	B C	22N			
C43	A D	16N	C2220	A D	11I	C5201	A D	1G										R2134	B C	9C	R3212	B C	5D	R6061	B C	22N			
C44	A D	13M	C2221	A D	11I	C5202	A D	1G										R2135	B C	8D	R3213	B C	8D	R6068	B C	19N			
C45	A D	13M	C2222	A D	11I	C5203	A D	1G										R2136	B C	10A	R3214	B C	10A	R6069	B C	19N			
C46	B C	8N	C2223	A D	11I	C5204	A D	1G										R2137	B C	9J	R3215	B C	7A	R6510	B C	19N			
C47	B C	8N	C2224	A D	11J	C5205	A D	2H										R2138	B C	10L	R3216	B C	10A	R6511	B C	19N			
C48	B C	9N	C2225	A D	11J	C5206	A D	2H										R2139	A D	10L	R3217	B C	7D	R6551	A D	22O			
C49	B C	14L	C2226	B C	12I	C5207	A D	2F										R2140	A D	10K	R3218	A D	4D	R6552	B C	22O			
C50	A D	13H	C2227	B C	9I	C5208	A D	1E										R2141	A D	10K	R3219	B C	2B	R6553	A D	20N			
C51	A D	13H	C2228	B C	9I	C5209	A D	1E										R2142	B C	6L	R3220	B C	7C	R6554	A D	20N			
C52	A D	13H	C2229	B C	10J	C5209	A D	3G										R2143	B C	15M	R2252	B C	11I	R3222	B C	4A	R6601	B C	18M
C53	A D	14M	C2230	B C	10J	C5211	A D	3G										R2144	B C	19I	R2501	B C	20C	R3223	B C	15C	R7202	B C	20O
C54	A D	15M	C2231	B C	10M	C5212	A D	4J										R2145	B C	16M	R2502	B C	20C	R3224	B C	15C	R7203	B C	20O
C55	A D	11O	C2232	B C	9I	C5213	A D	4J										R2146	B C	13L	R2503	B C	20C	R3225	B C	7A	R7204	B C	19P
C56	A D	13K	C2233	B C	10I	C5301	A D	2E										R2147	B C	13M	R2504	B C	20C	R3229	B C	11C	R7251	B C	21A
C57	A D	13K	C2234	B C	12J	C5302	A D	2E										R2148	B C	17I	R2505	B C	19C	R3230	B C	12C	R7252	B C	21A
C58	A D	14G	C2235	B C	12I	C5303	A D	3E										R2149	B C	13N	R2506	B C	20D	R3231	B C	12C	R7253	B C	21A
C59	A D	14G	C2236	B C	12I	C5304	A D	3E										R2150	B C	14M	R2507	B C	19D	R3233	B C	7D	<b>TESTPOINT</b>		
C60	A D	14M	C2237	B C	12I	C5305	A D	3E										R2151	B C	12O	R2508	B C	19D	R3234	B C	7C	TP106	A D	6M
C61	A D	14M	C2238	B C	12I	C5306	A D	3E										R2152	B C	12O	R2509	B C	19D	R3235	B C	8D	TP111	A D	6M
C62	A D	14M	C2239	B C	12I	C5307	A D	3E										R2153	B C	12O	R2510	B C	19D	R3236	B C	8C	TP112	A D	6M
C63	A D	14M	C2240	B C	12I	C5308	A D	3E										R2154	B C	14M	R2511	B C	20B	R3237	B C	2B	TP2553	A D	6L
C64	A D	14M	C2241	B C	12I	C5309	A D	3E										R2155	B C	11O	R2512	B C	11O	R75	B C	2B	TP3901	B C	9C
C65	A D	14M	C2242	B C	12I	C5310	A D	3E										R2156	B C	13J	R2513	B C	19B	R3238	A D	2B	TP3902	B C	8C
C66	A D	14M	C2243	B C	12I	C5311	A D	3E										R2157	B C	10M	R2514	B C	19B	R3239	B C	2B	TP3903	B C	11C
C67	A D	14M	C2244	B C	12I	C5312	A D	3E										R2158	B C	12O	R2515	B C	20C	R3241	B C	3A	TP3904	B C	11C
C68	A D	14M	C2245	B C	12I	C5313	A D	3E										R2159	B C	10N	R2516	B C	18C	R3242	B C	8F	TP3905	B C	10C
C69	A D	14M	C2246	B C	12I	C5314	A D	3E										R2160	B C	16N	R2522	B C	17C	R3243	B C	2B	TP3906	B C	10C
C70	A D	14M	C2247	B C	12I	C5315	A D	3E										R2161	B C	16N	R2522	B C	17C	R3244	B C	2B	TP3907	B C	10C
C71	A D	14M	C2248	B C	12I	C5316	A D	3E										R2162	B C	16N	R2522	B C	17C	R3245	B C	9F	TP3908	B C	

# 4.1 MAIN, AUDIO ERASE, A/C HEAD AND LOADING MOTOR CIRCUIT BOARDS

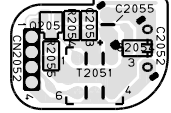
<03>MAIN  
LPB10106-001D

**DANGEROUS VOLTAGE**

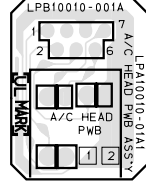




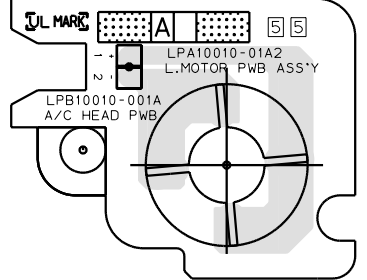
<46> AUDIO ERASE  
LPB10106-001D



<12> AC/HEAD  
LPB10010-001A



<55> LOADING MOTOR  
LPB10010-001A





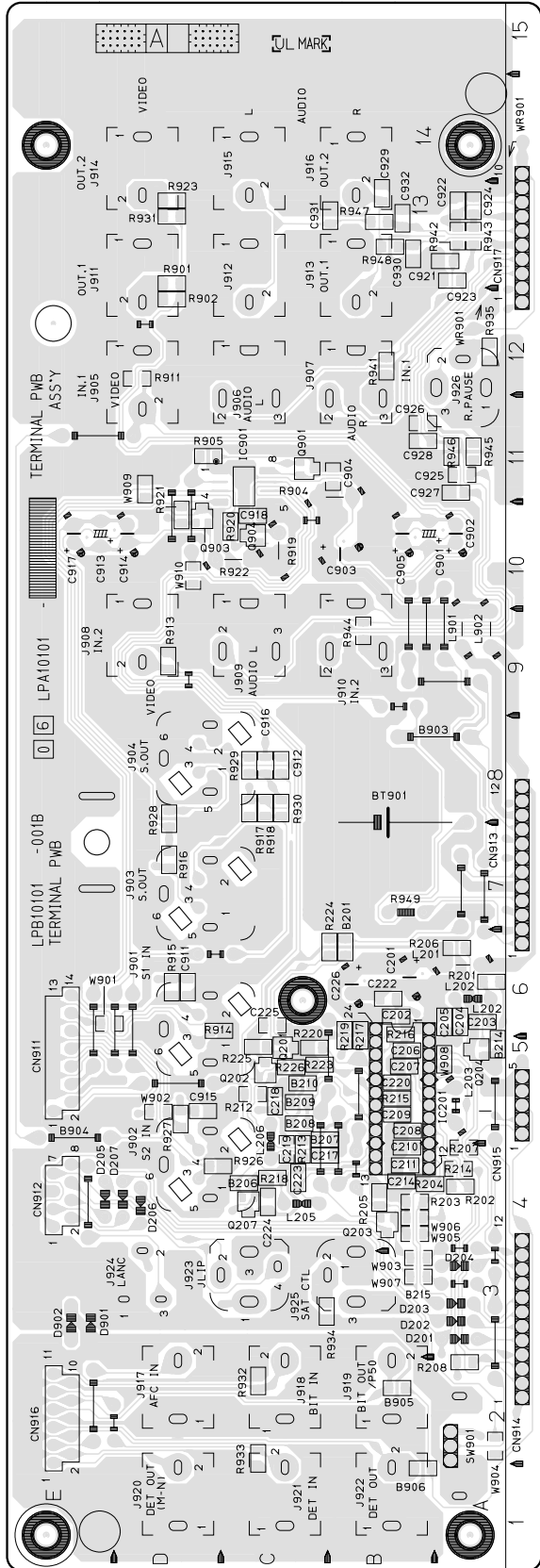






# 4.4 TERMINAL CIRCUIT BOARD

<06> TERMINAL  
LPB10101-001B

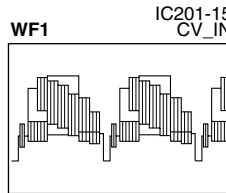


## COMPONENT PARTS LOCATION GUIDE <TERMINAL>

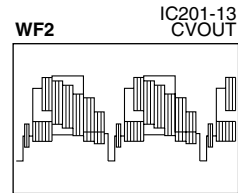
REF.NO.	LOCATION	REF.NO.	LOCATION	REF.NO.	LOCATION
<b>CAPACITOR</b>					
C201	A D	CN912	A D	L202	A D
C202	B C	CN913	A D	L203	A D
C203	B C	CN914	A D	L205	A D
C204	B C	CN915	A D	L206	A D
C205	B C	CN916	A D	L901	A D
C206	B C	CN917	A D	L902	A D
C207	B C				
C208	B C				
C209	B C				
C210	B C				
C211	B C				
C214	B C				
C217	B C				
C218	B C				
C219	B C				
C220	B C				
C222	B C				
C223	B C				
C224	B C				
C225	B C				
C226	B C				
C901	A D				
C902	A D				
C903	A D				
C904	B C				
C905	A D				
C911	B C				
C912	B C				
C913	A D				
C914	A D				
C915	B C				
C916	B C				
C917	A D				
C918	B C				
C921	B C				
C922	B C				
C923	B C				
C924	B C				
C925	B C				
C926	B C				
C927	B C				
C928	B C				
C929	B C				
C930	B C				
C931	B C				
C932	B C				
<b>DIODE</b>					
D201	A D	D201	A D	Q201	B C
D202	A D	D202	A D	Q202	B C
D203	A D	D203	A D	Q203	B C
D204	A D	D204	A D	Q204	B C
D205	A D	D205	A D	Q207	B C
D206	A D	D206	A D	Q901	B C
D207	A D	D207	A D	Q903	B C
D901	A D	D901	A D	Q904	B C
D902	A D	D902	A D		
<b>TRANSISTOR</b>					
<b>RESISTOR</b>					
<b>IC</b>					
IC201	A D	6B	R201	B C	6A
IC901	B C	11C	R202	B C	4A
<b>JACK</b>					
J901	A D	6D	R203	B C	4B
J902	A D	4D	R204	B C	4B
J903	A D	7D	R205	B C	4B
J904	A D	8D	R206	B C	6A
J905	A D	12D	R207	B C	4A
J906	A D	12C	R208	B C	5C
J907	A D	12B	R212	B C	2A
J908	A D	9B	R213	B C	4C
J909	A D	9C	R214	B C	4A
J910	A D	9B	R215	B C	5B
J911	A D	13D	R216	B C	6B
J912	A D	13C	R217	B C	4C
J913	A D	13B	R218	B C	6B
J914	A D	14D	R219	B C	5C
J915	A D	14C	R220	B C	5C
J916	A D	14B	R223	B C	6B
J917	A D	2D	R224	B C	5C
J918	A D	2C	R225	B C	5C
J919	A D	2B	R226	B C	5C
J920	A D	1D	R901	B C	12D
J921	A D	1C	R902	A D	11B
J922	A D	1B	R904	B C	11D
J923	A D	3C	R905	B C	12D
J924	A D	3D	R911	B C	9D
J925	A D	3B	R913	B C	6D
J926	A D	12A	R914	B C	7D
<b>CONNECTOR</b>					
CN911	A D	5E	R915	B C	8C
<b>COIL</b>					
L201	A D	6A	R916	B C	8C
			R917	B C	8C
			R918	B C	8C
			R919	A D	10C

## WAVEFORMS

— TERMINAL —



REC/PB 2.2 Vp-p  
50 mV/20 μsec/DIV



REC/PB 2.2 Vp-p  
50 mV/20 μsec/DIV